

TELESTAR[®]

TOP CAR 2

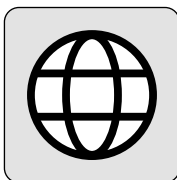


user manual

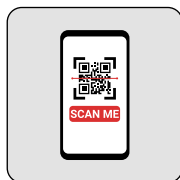
Bedienungsanleitung · User manual · Manuel d'utilisation
Manuale d'uso · Manual de usuario · Handleiding · Příručka
Instrukcja obsługi · Használati útmutató · Manual de utilizare
Brukermanual · Användarmanual · Käyttöohje · Brugervejledning
Návod na použitie · Manual do utilizador
Ръководство за употреба · Navodila za uporabo
Upute za uporabu · Εγχειρίδιο χρήσης · Kasutusjuhend
Lietošanas pamācība · Naudojimo vadovas



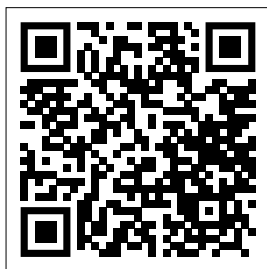
Manual



Languages



Scan me!



<https://www.telestar.de/support/dl/>

Table of contents

1. Safety instructions	04
2. Scope of delivery	05
3. Overview and connections	06
4. Installation	08
4.1 Getting started	08
4.2 Installation in the vehicle	09
5. Initial commissioning	11
6. Operation	12
6.1 DAB operation	12
6.1.1 Calling up the channel list and selecting a channel	12
6.1.2 Saving favourite stations	12
6.1.3 Calling up favourite stations	13
6.2 Setting the TX frequency (FM transmission)	13
6.2.1 Setting the TX frequency	13
6.2.2 Tuning the car radio to the TX frequency	13
6.3 SD card	14
6.3.1 Inserting a microSD card	14
6.3.2 Starting SD music mode	14
6.3.3 Controlling music playback	14
6.4 Bluetooth playback	15
6.4.1 Activating Bluetooth	15
6.4.2 Pairing your smartphone	15
6.5 System settings	16
6.5.1 Volume	16
6.5.2 FM Transmitter	16
6.5.3 Time	16
6.5.4 Lighting	17
6.5.5 Language	17
6.5.6 Factory settings	17
6.5.7 Software-Version	17
7. Troubleshooting	18
8. Technical data	19

1. Safety instructions

General information

Read these instructions carefully before use and keep them in a safe place. Do not use or store the device near children without supervision.

Power supply

The device may only be operated via USB with 5 V DC voltage. Only use the recommended USB adapter for the cigarette lighter (12/24 V) in the vehicle. Do not connect the device directly to a 12/24 V power source.

Integrated battery

The device contains a permanently installed battery. Do not open, damage or heat the device. Do not expose it to heat above 50 °C, direct sunlight or fire. Do not cover the device to prevent overheating. Do not continue to use the device if it is visibly damaged.

Operation in the vehicle

Ensure that the device is securely fastened so that it cannot slip during driving. Only operate the device when stationary or by the passenger to avoid distractions while driving.

Radio connections

DAB+, FM and Bluetooth reception may be affected by structural conditions, other radio equipment or environmental influences. Maintain a minimum distance of 20 cm between the device and your body.

Memory cards

Only use compatible microSD memory cards. Do not remove the memory card during playback.

Cleaning & maintenance

Disconnect the device from the power supply before cleaning. Clean with a dry, soft cloth. Do not use liquids or cleaning agents. Repairs may only be carried out by qualified personnel.

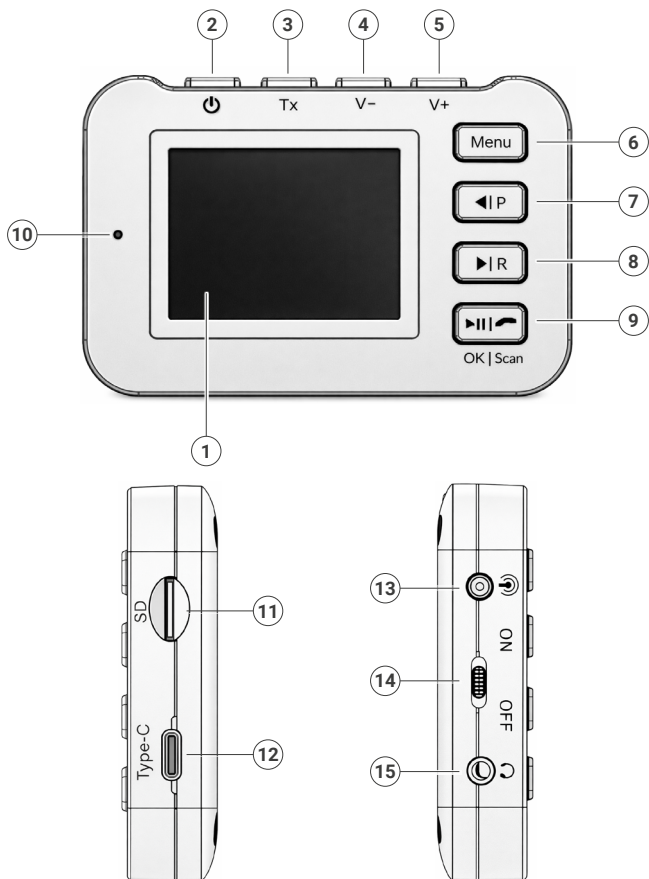
Disposal

This device must not be disposed of with household waste. Dispose of it in accordance with local regulations for electrical and electronic equipment and batteries.

2. Scope of delivery

- TELESTAR TOP CAR 2
- Suction cup mount with swivel ball joint for the windscreen
- Mount for ventilation slots
- USB-C to USB-A charging cable
- Cigarette lighter USB charging adapter (2-way)
- Active antenna with SMB connector and self-adhesive cable clips (3 m)
- User manual

3. Overview and connections



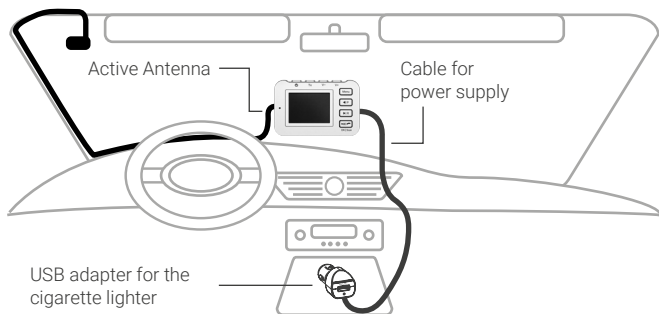
3. Overview and connections

1. **Display**
Shows info like station, frequency, volume, and operating mode.
2. **On/Standby button**
 - Turns the device on when it's in standby mode
 - Puts the device into standby mode when it's on
3. **TX button**
Calls up and sets the transmission frequency.
4. **V– (Volume down)**
Decreases the volume.
5. **V+ (Volume up)**
Increases the volume.
6. **Menu button**
Opens the main menu of the device.
7. **◀ | P (Left / Previous station)**
 - Navigate left / previous menu item
 - Search for stations downwards (TUNE–) in the main menu
 - P: Press and hold while a DAB station is playing to save the current station to a favourite button.
8. **▶ | R (Right / Next station)**
 - Navigate to the right / next menu item.
 - Search for stations upwards (TUNE+) in the main menu.
 - R: Press and hold to call up saved favourite stations.
9. **▶|| | 🔊 | OK | Scan**
 - Confirm menu selections (OK)
 - Start or pause playback in Bluetooth mode
 - Accept or end calls in hands-free mode
 - Automatic station search in DAB mode
10. **Microphone**
Integrated microphone for hands-free functions.
11. **SD card slot**
Slot for SD cards.
12. **USB-C port (5 V, 1 A)**
Port for charging the device via USB-C.
13. **Antenna connection**
Connection for the external antenna.
14. **ON/OFF**
Turns the device on or off.
15. **Headphone connection**
Also for connection to the AUX socket of the car radio if no Bluetooth connection is possible.

4. Installation

4.1 Getting started

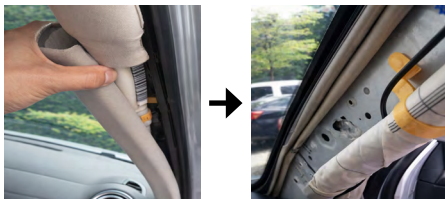
1. Unpack the device and check that it is complete.
2. Install the DAB+ windscreen antenna (as shown):
 - Attach the antenna element to the windscreen (as high as possible).
 - Attach the ground foil to a suitable metal part of the car body (clean, grease-free).
3. Plug the antenna connector into the antenna connection (13) on the device.
4. Connect the power supply:
 - In the vehicle via 12/24 V cigarette lighter with USB adapter, or
 - alternatively via USB-C (5 V).
5. Switch on the device and start an automatic DAB+ station search.



4. Installation

4.2 Installation in the vehicle

Step 1: Carefully remove the plastic trim from the A-pillar.



Step 2: Remove the protective film from the antenna.



Step 3: Run the antenna cable along the A-pillar as shown in the illustration, secure it firmly and then refit the plastic trim on the A-pillar.



4. Installation

Step 4: Install the device in the vehicle.

There are two mounting options available for installing the device. Select the option that is suitable for your vehicle.

Option A: Mounting on the ventilation nozzle

1. Securely attach the ventilation bracket to a suitable ventilation nozzle. Ensure that the ventilation slots are not damaged and remain flexible.
Place the device on the bracket. The device is held in place magnetically and automatically aligns itself correctly.

Option B: Mounting with suction cup on the windscreen

1. Clean the desired area on the windscreen thoroughly so that the suction cup adheres optimally.
2. Attach the suction cup mount to the windscreen and press it firmly.
3. Place the device on the mount. Here, too, the device is held in place magnetically.



Step 5: Connect the antenna and start DAB+ reception

1. Plug the antenna connector into the antenna port on the device.
2. Connect the device to the USB adapter for the cigarette lighter (12/24 V) using the USB-C cable and plug this into the cigarette lighter in the vehicle.
3. Switch on the device (14) and set the TX frequency (see section 6.2 Setting the TX frequency).
4. Once the setting has been successfully completed, you can receive and play DAB+ radio stations.

5. Initial commissioning

When you switch on the device for the first time, a DAB+ station search will start automatically. This will search for and save all DAB+ radio stations available in your region. The search process usually takes 1–2 minutes. Please do not interrupt the process in order to obtain a complete station list.

Set menu language:

When the device is first put into operation, the menu language is set to English by default. To ensure comfortable operation of the device, we recommend setting the desired language (e.g. German).

Procedure:

1. Press and hold the Menu button to open the main menu.
2. Select Set and confirm with OK.
3. Select Language and confirm with OK.
4. Select the desired language and confirm with OK.

Navigation in the menu:

- ◀ | **P**: previous menu item
- ▶ | **R**: next menu item
- ▶|| **OK**: Confirm selection

6. Operation

6.1 DAB operation

If Digital Audio Broadcasting (DAB+) is available in your region, the device can receive digital radio stations.

1. Press and hold the menu button to open the main menu.
2. Select the DAB icon and confirm with OK.

Note:

The automatic DAB+ station search is performed when the device is first started up. The stations found are automatically saved in the station list.

If necessary, a new station search can be started manually at any time (e.g. after a change of location). To do this, press and hold the ►|| OK button in DAB+ mode. The station search will then be restarted.

6.1.1 Calling up the channel list and selecting a channel

1. Press the ◀ | P or ▶ | R button to open the channel list.
2. Navigate through the list using the ◀ | P (previous channel) and ▶ | R (next channel) buttons.
3. Confirm the desired channel with OK to play it.

Note:

Press the menu button briefly to return to the main menu.
Press and hold the menu button to open the submenu or system settings.

6.1.2 Saving favourite stations

1. Select a DAB station and ensure that it is currently playing.
2. Press and hold the ◀ | P button to open the memory mode for favourites.
3. Select a memory location using ◀ | P or ▶ | R.
4. Confirm with OK to save the station.

Up to 40 favourite stations can be stored.

6. Operation

6.1.3 Calling up favourite stations

1. In DAB mode, press and hold the ► | R button to open the favourites list.
2. Use ◀ | P or ► | R to select the desired favourite station.
3. Confirm with OK to play the station.

6.2 Setting the TX frequency (FM transmission)

6.2.1 Setting the TX frequency

1. Press the TX button to access the transmission frequency setting.
2. Use the ◀ | P or ► | R buttons to set the desired FM frequency in the range from 87.5 MHz to 108 MHz.
3. If possible, select a free frequency that is not used by any local radio stations in your area to avoid interference.
4. Confirm the set frequency with OK.

6.2.2 Tuning the car radio to the TX frequency

1. Now tune your car radio to the same FM frequency.
2. The audio signal (DAB+ radio, music or telephone) from the device will now be played through the car radio.

Note on optimal sound quality:

- Use a free, unoccupied FM frequency.
- If interference occurs, changing the TX frequency may improve reception quality.

6. Operation

6.3 SD card

The DAB+ adapter supports the playback of MP3 music files via a microSD card (TF card). The microSD card is not included in the scope of delivery!

6.3.1 Inserting a microSD card

1. Insert a suitable microSD card with a maximum capacity of 512 GB into the SD card slot on the device. Ensure that the contacts on the microSD card are facing upwards towards the display.


6.3.2 Starting SD music mode

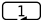
1. Press the Menu button to open the main menu.
2. Select the SD icon and confirm with OK to start SD music mode.

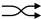
6.3.3 Controlling music playback

1. ◀ | P: previous title
2. ▶ | R: next track
3. ▶|| | OK: Start or pause playback

Press and hold the ▶|| | OK button to switch between the different playback modes. The currently active mode is indicated by a corresponding symbol in the bottom right corner of the display:

 All tracks are played consecutively and restarted after the last track.

 The currently playing track is repeated continuously.

 The tracks are played in random order.

Notes:

- Supported file format: MP3
- The MP3 files must be stored in the root directory of the microSD card. Files in subfolders will not be recognised.
- Only use compatible microSD cards (max. 512 GB).
- Do not remove the microSD card while playback is in progress.

6. Operation

6.4 Bluetooth playback

The DAB+ adapter supports Bluetooth music playback and hands-free calling with your smartphone.

6.4.1 Activating Bluetooth

1. Press the menu button to open the main menu.
2. Select the Bluetooth icon (BT) and confirm with OK to start Bluetooth mode.

6.4.2 Pairing your smartphone

1. Activate Bluetooth on your smartphone.
2. Select "TELESTAR TOP CAR 2" from the list of available Bluetooth devices.
3. The connected smartphone will be shown on the display after successful pairing.

Note on reconnection:

The Bluetooth connection will not be automatically re-established if the smartphone was out of range or Bluetooth was deactivated and reactivated in the meantime.

In this case, the connection must be re-established manually by pressing and holding the ►|| | **OK** button on the device.

It is not usually necessary to re-pair in the smartphone menu.

6. Operation

6.5 System settings

In the system settings, you can adjust basic functions such as volume, time, display, language and system settings.

6.5.1 Volume

1. Press V+ or V– to set the desired volume.

6.5.2 FM Transmitter

1. FM Switch: This option allows you to switch the FM transmitter on or off.
ON: FM transmission is active (signal is sent to the car radio)
OFF: FM transmission is deactivated
2. TX Frequency: Here you can set the transmission frequency of the FM transmitter. Set a free FM frequency and confirm with OK.

Note: If the FM switch is deactivated (OFF), no sound will be transmitted via FM, even if a TX frequency is set.

6.5.3 Time

The time and date are set automatically via the DAB+ signal. This function can be adjusted in the "Auto Update" submenu.

Note:

Manual settings are overwritten as soon as time or date information is received again via a DAB+ signal.

Setting the time and date manually:

1. Press the Menu button to open the main menu.
2. Select System Settings and confirm with OK.
3. Select Time/Date and confirm with OK.
4. Select the 12-hour or 24-hour format.
5. Select Set Time/Date.
6. Set the time and date using the navigation buttons and confirm with OK.
7. Select Date Format to switch between two display formats.

6. Operation

6.5.4 Lighting

1. Select one of the following options:
 - Dim after: Time period after which the display brightness is reduced
 - Brightness: Brightness of the display when switched on
 - Dimmer brightness: Brightness of the display in standby mode
2. Set the desired value and confirm with OK.

6.5.5 Language

1. Select Language and confirm with OK.
2. Select the desired menu language and confirm with OK.

6.5.6 Factory settings

1. Select Factory settings and confirm with OK.
2. Select Yes to reset the device or No to cancel the process.

Note:

When you reset to factory settings, all stored stations, favourites and settings will be deleted.

6.5.7 Software-Version

1. Select Software version and confirm with OK.
2. The currently installed software version is displayed.

7. Troubleshooting

Symptom	Possible cause / solution
Device does not switch on	Check the power supply via the cigarette lighter or USB-C. Check the cables and USB adapters.
Display remains dark	Ensure that the vehicle ignition is switched on. Check the display brightness in the system settings.
No sound from the car radio	Check that the TX frequency is set identically on the device and on the car radio. Select a free FM frequency.
Noise or static	Change the TX frequency and avoid occupied FM stations.
No DAB+ reception	Check the antenna connection and antenna installation. Start a new DAB+ station search.
DAB+ reception breaks off	Dependent on reception (e.g. tunnels, rural areas). Optimise antenna position if necessary.
Poor DAB+ reception / interference	Only use suitable USB adapters with adequate interference suppression. Unsuitable or inferior USB power supplies can impair DAB+ reception.
Bluetooth connection not possible	Activate Bluetooth on your smartphone, disconnect old connections and pair again.
No sound during Bluetooth playback	Check the volume on the device and on your smartphone. Activate Bluetooth mode.
microSD card is not recognised	Only use microSD cards up to a maximum of 512 GB. Insert the card correctly.
Device no longer responds	Briefly disconnect the power supply or perform a factory reset.

8. Technical data

Performance characteristics:

- DAB+ car radio adapter with DLS (Dynamic Label Segment)
- Dimmable 2.4" LCD colour display
- Built-in battery (200 mAh)
- Power supply via USB (5 V), operation in the vehicle via 12/24 V cigarette lighter using USB adapter
- Wireless transmission to the car stereo via FM transmitter or line-out/headphone output
- Bluetooth 5.0 for hands-free calling and music reception from smartphone
- Bluetooth frequency range: 2.4-2.48 GHz
- Bluetooth transmission power: max. 8 dBm
- Integrated hands-free device
- Automatic search for available DAB+ stations
- Service Following: The device automatically searches for an alternative frequency when leaving a transmission area
- Automatic switch from music playback to hands-free mode when a call comes in
- 40 favourite memory slots
- MP3 player via microSD card reader (max. 512 GB)
- Supported music formats: MP3/WMA
- 12 languages selectable
(English, German, Italian, French, Dutch, Spanish, Portuguese, Swedish, Danish, Norwegian, Finnish, Polish)
- Active DAB+ foil antenna for best possible reception

Connections:

- 1x antenna input (SMB)
- 1x audio/headphone output (3.5 mm jack)
- 1x power input (via USB-C)

Dimensions / Weight:

- 105 x 70 x 16.8 mm (W/H/D)
- 92 g (net)

Legal notices

Conformity information

Telestar GmbH hereby declares that the following devices comply with the essential requirements and other relevant provisions of the directives:

- 2014/53/EU (Radio Equipment Directive – RED)
- 2011/65/EU + 2015/863/EU (RoHS)
- 1907/2006 (REACH)

Telestar TOP CAR 2 (Art.-No. 5700004)

The complete declaration of conformity is available from Telestar GmbH and can be accessed online at: www.telestar.de/support/dl



Disclaimer

This operating manual has been compiled with the utmost care. Nevertheless, we accept no liability for any errors, misprints or incorrect information. Subject to changes and technical developments. Use at your own risk.

Legal notices

Symbols and notes



Old appliances must not be disposed of with household waste. You are legally obliged to hand in old electrical and electronic appliances to municipal collection points. Batteries and rechargeable batteries must be handled properly before disposal.

WEEE-Reg.-Nr.: DE49015927



The packaging for this product is made from environmentally friendly materials that can be recycled. Please dispose of packaging and filling materials in accordance with local waste separation regulations.



Note on disposal of the integrated battery

This device contains a permanently integrated battery that cannot be removed by the user. The battery must not be disposed of with household waste. When the device is disposed of, the battery will be removed and recycled by authorised disposal companies. Please take the device to a suitable collection point for old electrical appliances for disposal. Batteries that contain harmful substances are marked with the symbol of a crossed-out wheeled bin and the chemical symbols Pb (lead), Cd (cadmium) or Hg (mercury).

Cd
Hg
Pb

Version 1.0 (01/2026)

TELESTAR GmbH, Brückenstraße 2a, D-97618 Niederlauer
Telefon: 09771 / 63567-200, Fax: 09771 / 63567-144
www.telestar.de, info@telestar.de